

Victorian Training Market Report Full Year 2014

Background

The Victorian Department of Education and Early Childhood Development periodically publish Victorian Training Market Reports. The most recent Victorian Training Market Report (the Report) was published for the year January 2014 to December 2014. The next report will be based on the 2015 half-year results. The Report and similar publications since 2012 can be accessed at

<http://www.education.vic.gov.au/training/providers/market/pages/reports.aspx>.

The report notes:

- The main source of vocational training statistics is the training activity database referred to as Skills Victoria Training System (SVTS). Data included in the report are a snapshot in time and based on information reported by training providers to the Department. For TAFE Institutes, there is an additional regulatory requirement that they also submit their fee-for-service activity data. From 2015 all training providers, not just TAFEs, will be required to report their fee-for-service training activity and this data will be included in subsequent training market reports.
- Annual data included in this report may differ to those in previous publications as the Department is continuously updating classifications to improve data quality and consistency across years. From time to time changes to reporting and data standards may lead to minor revisions to data previously reported. The data reported in this report was extracted in February 2015.
- The former dual sector TAFEs (i.e. delivered through a University) have been labelled as University throughout this report, this covers RMIT, Swinburne, Federation and Victoria Universities.
- To ensure a degree of consistency of “foundation courses” in this report, any course that was identified in the foundation skills list of courses whether in 2013 or 2014 is considered for the purposes of this report as a foundation course.
- For the purposes of this report the term Learn Local is used interchangeably with Adult and Community Education (ACE). However, it should be noted that only Learn Local organisations report through to the Adult, Community and Further Education Board, ACE organisations are self-identified and are not required to report through to the Board. In 2014 there were a very small number of Learn Local organisations that self-identified to SVTS as private registered training organisations (RTO) and therefore are not included in the count of Learn Local organisations.
- Data presented in the section of Training in Specialised and In-Shortage Occupations is for industry specific enrolments, i.e. training with a direct labour market outcome. This covers government subsidised training in Australian Qualifications Framework (AQF) qualifications, and excludes training in foundation skills, education pathways and low-level courses in languages other than English.

This summary paper aims to draw out key messages for VTA members from the report’s 83 pages of data and commentary. Pages 2 to 4 can be used as a stand-alone summary.

Andrew Williamson
Executive Director
Victorian TAFE Association
May 2015

Victorian Training Market Report Half Year 2014 - Key Messages:

Vocational Training Summary

- There were 443,687 students enrolled in government subsidised training in 2014, this was 8 per cent lower than 2013.
- The number of government subsidised enrolments reported in 2014 was 557,846, this was 14 per cent lower than 2013.

Qualification Levels

- The 2014 data shows that there were 352,663 government subsidised course enrolments at the Certificate III to IV levels which represented 63 per cent of all government subsidised enrolments. This was down on the 2013 result by 1 per cent.
- Government subsidised course enrolments at the Certificate I to II levels were lower in 2014 than 2013 by 52 per cent.
- In 2014, there were 64,391 government subsidised enrolments in Diploma and above qualification, this was lower than 2013 by 6 per cent.
- In 2014, there was an increase in government subsidised enrolments in 'Other' qualification category on the 2013 figure, this was mainly due to an increase in enrolments in the Literacy and Numeracy Support foundation course which was introduced in late 2013.

TAFE Domestic Fee-for-Service Course Enrolments

- For TAFE domestic fee-for service enrolments at AQF Certificate 1 and above (excluding foundation courses), Certificate III to IV is the largest qualification group.
- TAFE fee-for-service enrolments at all qualification levels were higher in 2014 than 2013.

Vocational Training Completions

- By the end of 2014, 34 per cent of courses commenced in 2013 were reported as being completed. This is in comparison to 41 per cent of courses commenced in 2011 which were reported as being completed by 2014.
- While the completion rate in 2014 was just 22 per cent, over a quarter of courses commenced in 2014 were still in progress.
- Just over half (51 per cent or 173,108) of all courses commenced in 2014 were not completed, i.e. there was no more activity associated with the course.
- There has been a steady decline in the completion rate from 2011 onwards. Since 2012 the number of courses commenced each year has also been steadily declining.
- There were 249,687 course completions reported to the Department in 2014 by training providers, this was up by 13 per cent on the 2013 result.
- Of these completions reported in 2014, 217,359 (87 per cent) were actually completed in 2014, 30,246 (12 per cent) were completed in 2013 and 2,082 (1 per cent) were completed in 2012 or earlier.

Age Profile

- Young people aged 15 to 24 accounted for 40 per cent of all students enrolled in government subsidised training in 2014, down from 41 per cent in 2013.
- The most significant decline in age groups between 2013 and 2014 was by 15 to 19 year olds. In 2014 there were 85,334 15-19 year olds enrolled in training, this was 18 per cent lower than the 2013 result.
- The numbers of students enrolled in government subsidised training in 2014 were lower than those in 2013 across all age groups.

Vocational Education and Training in Schools (VETiS)

- In 2014, there were 50,628 students who participated in VETiS, and just under 4,000 of them participated in a School Based Apprenticeships and Traineeships (SBAT) program.
- The overall student participation in VETiS in 2014 was 2 per cent higher than 2013. The increase in VETiS participation was due to the increases in school students and students who were enrolled in VCE/VCAL in the TAFE/University sectors.
- The majority of VETiS activity was delivered by VET providers, i.e. TAFEs, Universities, Learn Local and Private RTOs.
- In 2014, there were 86,964 students enrolled in TAFE fee-for-service at the Certificate I and above levels. Thirty nine per cent of these students were between 15 and 24 years old.
- Student numbers in 2014 were higher than those in 2013 across all age groups.

Gender

- In 2014 there were 234,910 male students enrolled in government subsidised training, this was 9 per cent lower than in 2013.
- In 2014 there were 208,139 female students enrolled in government subsidised training, this was 8 per cent lower than in 2013.
- In 2014 about 47 per cent of all students enrolled in government subsidised training were female, this was similar to the 2013 result.

Government Subsidised Activity and Participation by Regions

- All regions showed a decline between 2013 and 2014 in the number of government subsidised enrolments delivered in each region.
- The Hume region had the largest decrease between 2013 and 2014 of 35 per cent, while Northern Metropolitan Melbourne had the lowest with a decline of 4 per cent.
- All regions showed a decline in the number of students participating in government subsidised training between 2013 and 2014.
- The largest percentage decline between 2013 and 2014 in the number of students enrolled in government subsidised training was the Loddon Mallee region where there was a 15 per cent decline.
- Overall there was a 12 per cent decline between 2013 and 2014 in the number of students living in regional Victoria enrolled in government subsidised training. The decline in metropolitan Melbourne was 7 per cent over the same period.

Government Subsidised Training by Training Provider Type

- All provider types, except Private Registered Training Organisations (RTO), showed a decline in the number of government subsidised enrolments between 2013 and 2014. Private RTOs showed a marginal increase of 1,538.
- In 2014 over half (56 per cent) of all government subsidised enrolments were with Private RTOs. The share held by TAFEs was 25 per cent in 2014, down from 32 per cent in 2013.

TAFE Performance

- In 2014 there were a total of 220,020 students studying at TAFE, in government subsidised and fee-for-service (AQF and non-AQF). This was the lowest over 2009 to 2014 and 6 per cent lower than 2013.
- In 2014 overall training activity by TAFEs, including all government subsidised and all fee-for-service (AQF and non-AQF) course enrolments were the lowest over 2009 to 2014 at 289,591 in 2014. The 2014 result was down by 15 per cent compared to 2013.
- TAFEs are a major provider of apprentice training, in 2014 there were 26,069 government subsidised apprentice enrolments delivered by TAFEs, which represented a 60 per cent share of all government subsidised apprentice enrolments across all sectors.
- In 2014 TAFEs delivered 6,485 government subsidised trainee enrolments, which accounted for a 17 per cent share of all government subsidised trainee enrolments.

Apprenticeships and Traineeships

- There were 80,042 students who were enrolled in 81,935 government subsidised apprenticeship or traineeship courses in 2014.
- The number of government subsidised enrolments in 2014 were down by 19 per cent compared to 2013. The number of students in training was down by 20 per cent over the same period.
- In 2014, there were 43,453 government subsidised apprentice course enrolments. Of these, 39 per cent (17,105) were new enrolments commencing in 2014.
- The overall number of apprentice course enrolments was marginally higher in 2014 than 2013.
- About one third of apprentice course enrolments were by students aged 15 to 19. Enrolments by this age group were lower in 2014 compared to previous years.
- The vast majority of apprentice course enrolments were in occupations classified as Technicians and Trade Workers, which include Automotive and Engineering Trades Workers, Construction Trades Workers, Electrotechnology and Telecommunications Trades Workers, Engineering ICT and Science Technicians, Food Trades Workers, Other Technicians and Trades Workers, and Skilled Animal and Horticultural Workers.
- In 2014, there were 38,483 government subsidised trainee course enrolments. Of these, 44 per cent (16,976) were new enrolments commencing in 2014.
- The number of trainee course enrolments in 2014 was lower than previous years, 2014 total enrolments were down by 34 per cent compared to 2013.
- In 2014, trainee course enrolments were lower than 2011, 2012 and 2013 across all age groups.

Training in Specialised or In Shortage Occupations

- There were 439,640 enrolments in industry specific training in 2014. Of these, 207,202 enrolments were in qualifications related to specialised or in shortage occupations in 2014.
- Enrolments aligned to specialised or in shortage occupations accounted for 47 per cent of all industry specific enrolments in 2014. The proportion of industry training aligned to specialised or in shortage occupations has increased by 4 percentage points since 2013.
- In 2014, there were 169,730 enrolments (39 per cent of all industry specific enrolments) in qualifications aligned to occupations in shortage.
- In 2014, enrolments in qualifications for specialised occupations accounted for 30 per cent of all industry specific enrolments (133,745 enrolments).
- Private RTOs accounted for a majority of training related to critical occupations; 59 per cent of delivery in 2014.
- The highest number of enrolments were in qualifications aligned to Child Care Workers and Aged or Disabled Carers in 2014.

Victorian Training Market Report Full Year 2014 Summary

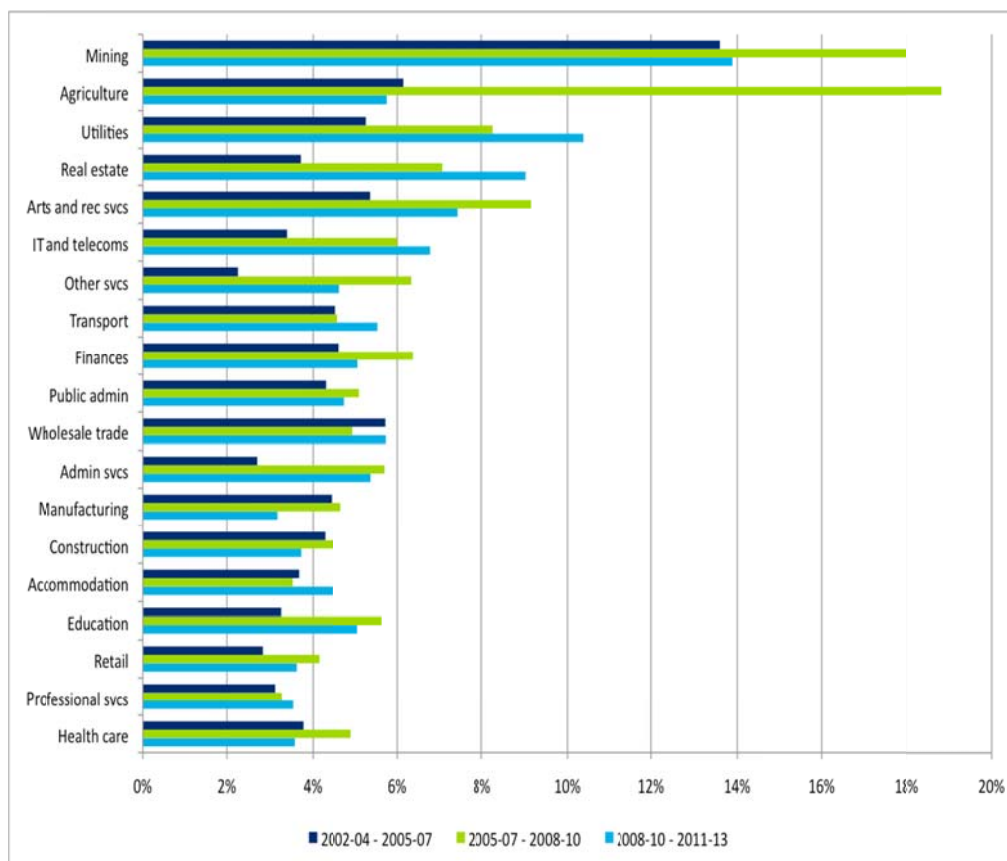
Victoria's Economy¹

As noted in the Victorian Training Market Report for the half year 2014, Victoria has experienced the fastest pace of structural change of all the Australian States and Territories. Over the 23 years from 1989–90 to 2012–13, the structure of the Victorian economy and labour force changed by 13.2 per cent.

Over this time manufacturing's share of industry output has fallen from 17 per cent to 9 per cent, mining declined from 8 per cent to 2 per cent while agriculture's share has remained stable at around 3 per cent. The Half Year Report 2014 notes that those manufacturers and agricultural producers that continue to thrive in Victoria are those that move up the value chain, adopt advanced production practices and invest in skills and training.

The figure below shows the structural change index over time for the 19 Victorian industry categories.

Structural change index over time, industries in Victoria*

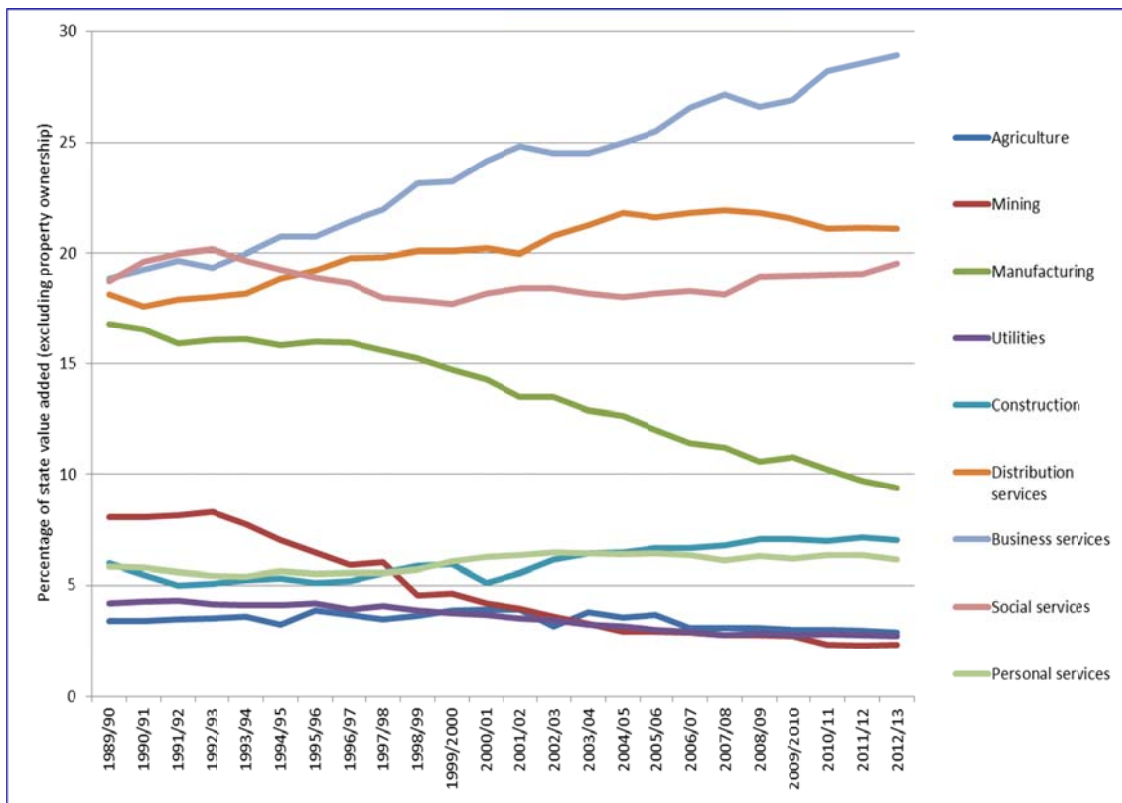


Source: Victorian Training Market Report Half Year 2014

*Calculated as the difference in employment by Victorian Labour Force region structure (averaged over three years) between two time periods.

¹ Extract Victorian Training Market Report for the half year 2014

Change in industry composition of the Victorian economy 1989/90 to 2012/13



SOURCE: ABS 5520.0 State National Accounts

Employment shares have followed a similar pattern, with business services, social services and personal services all increasing in the past five years and the total share of manufacturing jobs and agricultural employment declining. A third of net job losses in Victoria between 2006 and 2011 have come from secretaries, machine operations, managers, and livestock managers.

Over the next five years, growth in employment in Victoria is forecast to be in retailing, professional and technical services, and administration, education and health services. In the longer term, knowledge-based activities in advanced manufacturing, agriculture, information and communications technology and Victoria's service sector, together with international agricultural and service exports, are likely to drive job creation and output growth. Disruptive technologies (particularly automation) are likely to impact a broader range of jobs such as transport and logistics occupations, office and administrative support workers, labour in production occupations, retail and construction. Foundational skills will be important for all jobs.

A Certificate III qualification is emerging as the minimum qualification needed to achieve a rewarding career because it increasingly represents the entry-level skills for growing and emerging industries. In 2007, 65 per cent of the Victorians aged between 20 and 64 were employed in a skilled occupation or had a Certificate III or above. By 2013, this proportion had increased to close to 72 per cent, generally with year-on-year growth seen in the proportion for each of the five intervening years.

Vocational Training Summary

- There were 443,687 students enrolled in government subsidised training in 2014, this was 8 per cent lower than 2013.
- The number of government subsidised enrolments reported in 2014 was 557,846, this was 14 per cent lower than 2013.

Figure 1.1 VTMR (page 10): Students enrolled in vocational training by funding type, 2009 to 2014

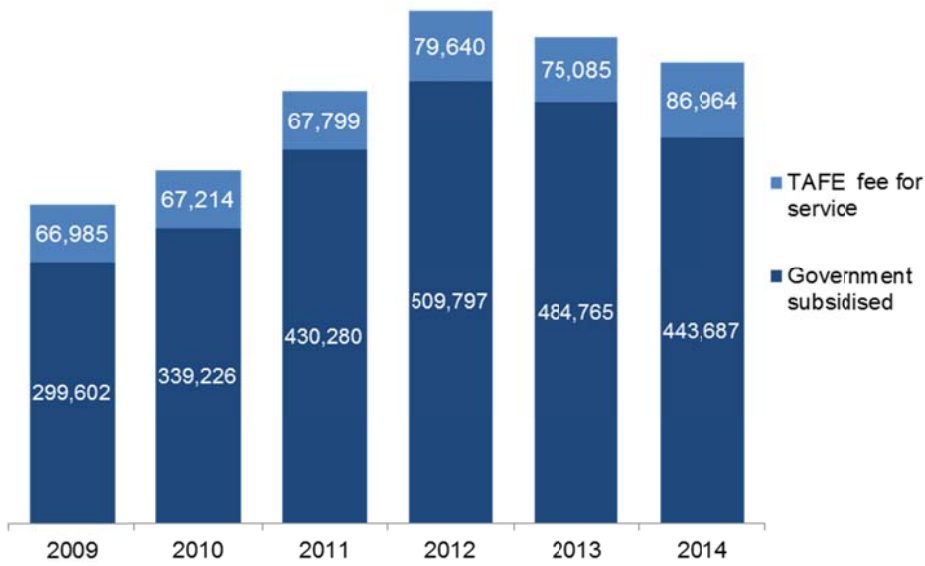


Figure 1.2 VTMR (page 11): Course enrolments in vocational training by funding type, 2009 to 2014

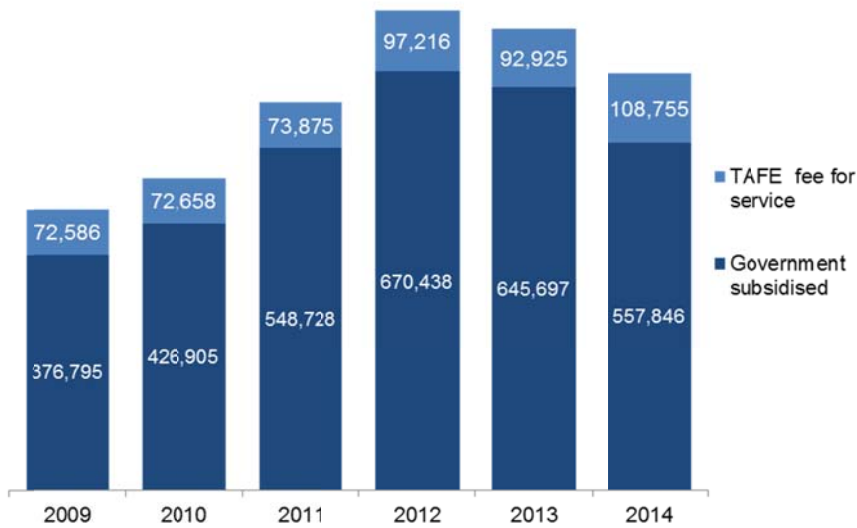
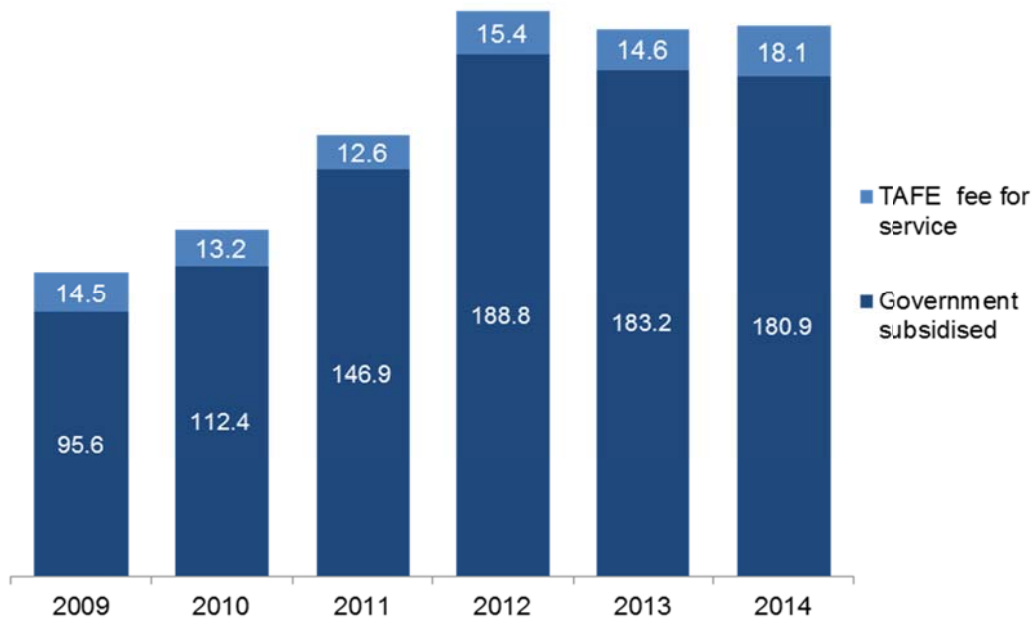


Figure 1.3 VTMR (page 12): Student contact hours (millions) in vocational training by funding type, 2009 to 2014



Qualification Levels

- The 2014 data shows that there were 352,663 government subsidised course enrolments at the Certificate III to IV levels which represented 63 per cent of all government subsidised enrolments. This was down on the 2013 result by 1 per cent.
- Government subsidised course enrolments at the Certificate I to II levels were lower in 2014 than 2013 by 52 per cent.
- In 2014, there were 64,391 government subsidised enrolments in Diploma and above qualification, this was lower than 2013 by 6 per cent.
- In 2014, there was an increase in government subsidised enrolments in 'Other' qualification category on the 2013 figure, this was mainly due to an increase in enrolments in the Literacy and Numeracy Support foundation course which was introduced in late 2013.
- **Table 1.6.1 (page 14): Government subsidised course enrolments in foundation skills courses by qualification level, 2009 to 2014**

	2009	2010	2011	2012	2013	2014	% change 2013 to 2014
Cert I/II	18,246	20,449	39,517	90,637	123,704	48,248	-61%
Cert III/IV	6,250	6,810	9,468	17,577	19,121	7,779	-59%
Secondary Education*	0	650	1,639	1,663	2,605	1,718	-34%
Other**	1,221	1,843	3,219	8,632	4,883	8,551	75%
Total	25,717	29,752	53,843	118,509	150,313	66,296	-56%

- * Includes VCAL (Foundation) course of study.
- **Other includes statement of attainment.


Table 1.4.1 VTMR (page 13 & 14): Government subsidised course enrolments by qualification level, 2009 to 2014

	2009	2010	2011	2012	2013	2014	% change 2013 to 2014	% change 2013 to 2014 excluding foundation skills courses
Cert I/II	83,638	93,834	119,439	154,760	167,745	79,907	-52%	-28%
Cert III/IV	165,863	201,687	287,858	365,939	356,168	352,663	-1%	2%
Diploma & Above	63,657	71,241	90,319	94,773	68,404	64,391	-6%	-6%
VET FEE-HELP*	854	9,463	11,099	11,566	18,403	17,755	-4%	
Without any VET FEE-HELP*	62,803	61,778	79,220	83,207	50,001	46,636	-7%	
Module Only	40,702	37,269	30,321	30,604	31,140	35,215	13%	13%
Secondary Education**	6,914	7,600	7,670	7,756	9,094	9,147	1%	14%
Other***	16,013	15,274	13,121	16,606	13,146	16,523	26%	-4%
Total****	376,795	426,905	548,728	670,438	645,697	557,846	-14%	-1%

* In 2014 a small number of contracted training providers failed to submit information on VET FEE-HELP.

** Includes VCE/VCAL courses of study.

***Other includes statement of attainment, other non-award courses or not elsewhere classified.

**** The 2009 total includes 8 enrolments in Higher Education. There were no enrolments in Higher Education after 2009.

TAFE Domestic Fee-for-Service Course Enrolments

- For TAFE domestic fee-for service enrolments at AQF Certificate 1 and above (excluding foundation courses), Certificate III to IV is the largest qualification group.
- TAFE fee-for-service enrolments at all qualification levels were higher in 2014 than 2013.

Table 1.7.1 VTMR (page 16): TAFE domestic fee-for-service course enrolments by qualification level (AQF 1+), 2009 to 2014

	2009	2010	2011	2012	2013	2014	% change 2013 to 2014
Cert I/II	34,402	35,171	35,799	46,469	44,521	50,024	12%
Cert III/IV	32,473	31,973	32,058	43,203	40,126	49,190	23%
Diploma & Above	4,683	4,258	4,633	5,948	6,833	8,066	18%
VET FEE-HELP*	105	437	756	940	1,031	1,544	50%
Without any VET FEE-HELP*	4,578	3,821	3,877	5,008	5,802	6,522	12%
Higher Education	1,028	1,256	1,385	1,596	1,445	1,475	2%
Total	72,586	72,658	73,875	97,216	92,925	108,755	17%

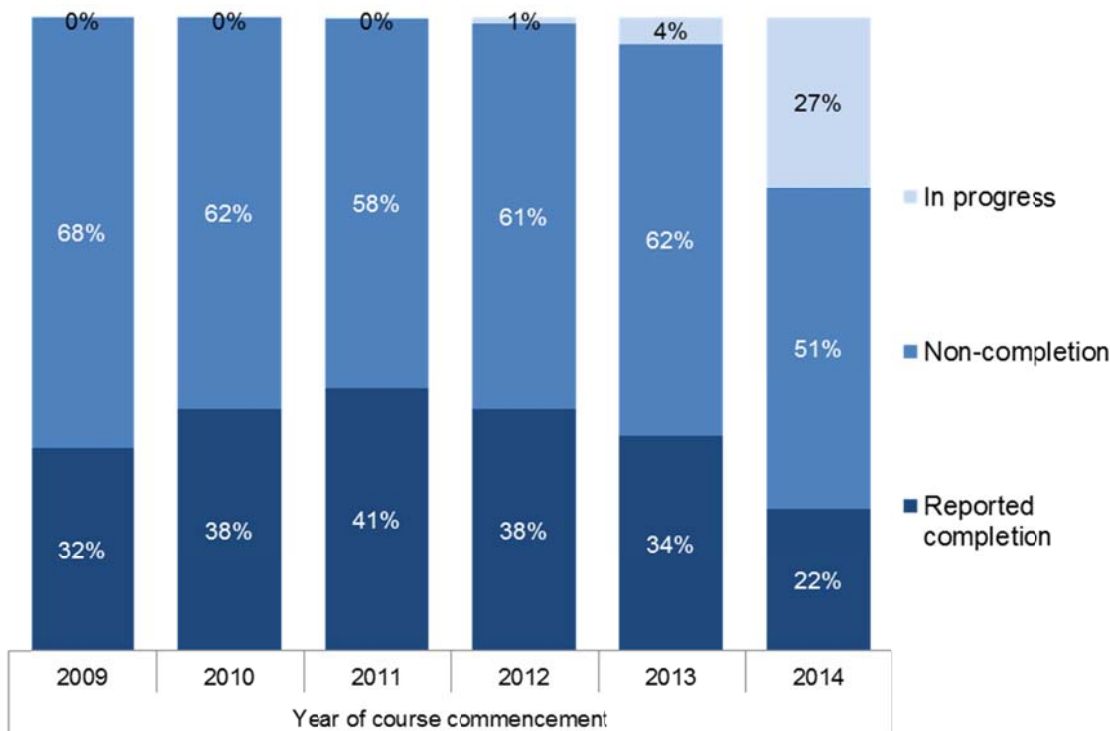
* In 2014 a small number of contracted training providers failed to submit information on VET FEE-HELP.

Vocational Training Completions

The report (page 18) notes, apart from the community and social benefits associated with higher levels of educational attainment, there is strong evidence that people who complete vocational training qualifications are at an advantage in the labour market in terms of employment and wage outcomes compared with those who do not complete their courses.

- By the end of 2014, 34 per cent of courses commenced in 2013 were reported as being completed. This is in comparison to 41 per cent of courses commenced in 2011 which were reported as being completed by 2014.
- While the completion rate in 2014 was just 22 per cent, over a quarter of courses commenced in 2014 were still in progress.
- Just over half (51 per cent or 173,108) of all courses commenced in 2014 were not completed, i.e. there was no more activity associated with the course.
- There has been a steady decline in the completion rate from 2011 onwards. Since 2012 the number of courses commenced each year has also been steadily declining.
- There were 249,687 course completions reported to the Department in 2014 by training providers, this was up by 13 per cent on the 2013 result.
- Of these completions reported in 2014, 217,359 (87 per cent) were actually completed in 2014, 30,246 (12 per cent) were completed in 2013 and 2,082 (1 per cent) were completed in 2012 or earlier.

Figure 1.4 (VTMR p19): Reported course completion rate of government subsidised training by year of course commencement, 2009 to 2014



Age Profile

- Young people aged 15 to 24 accounted for 40 per cent of all students enrolled in government subsidised training in 2014, down from 41 per cent in 2013.
- The most significant decline in age groups between 2013 and 2014 was by 15 to 19 year olds. In 2014 there were 85,334 15-19 year olds enrolled in training, this was 18 per cent lower than the 2013 result.
- The numbers of students enrolled in government subsidised training in 2014 were lower than those in 2013 across all age groups.
- In 2014, there were 86,964 students enrolled in TAFE fee-for-service at the Certificate I and above levels. Thirty nine per cent of these students were between 15 and 24 years old.
- Student numbers in 2014 were higher than those in 2013 across all age groups.

Table 1.12.1 (VTMR p23): Students enrolled in government subsidised training by age group, 2009 to 2014

	2009	2010	2011	2012	2013	2014	% change 2013 to 2014
15 to 19*	75,957	88,258	108,720	120,467	104,562	85,334	-18%
20 to 24	59,188	71,432	87,796	100,938	96,335	93,105	-3%
25 to 44	102,418	112,644	148,488	180,197	178,871	167,117	-7%
45 to 64	52,853	60,225	77,134	96,372	93,068	87,389	-6%
Other**	9,186	6,667	8,142	11,823	11,929	10,742	-10%
Total	299,602	339,226	430,280	509,797	484,765	443,687	-8%

* From 2014 students still at school (covering the 15 to 19 age group) could no longer access Victorian Training Guarantee funded training, unless part of an approved School Based Apprenticeship or Traineeship (SBAT).

** Other includes age under 15 years old, 65 years and over or not stated.

Vocational Education and Training in Schools (VETiS)

- In 2014, there were 50,628 students who participated in VETiS, and just under 4,000 of them participated in a School Based Apprenticeships and Traineeships (SBAT) program.
- The overall student participation in VETiS in 2014 was 2 per cent higher than 2013. The increase in VETiS participation was due to the increases in school students and students who were enrolled in VCE/VCAL in the TAFE/University sectors.
- The majority of VETiS activity was delivered by VET providers, i.e. TAFEs, Universities, Learn Local and Private RTOs.

Table 1.15.1 (VTMR p26): Students participating in VETiS by sector in which they were enrolled in, 2009 to 2014

	2009	2010	2011	2012	2013	2014	% change 2013 to 2014
VET - TAFE/University	2,361	2,763	2,855	2,933	3,406	3,611	6%
VET - Learn Local/Private RTO	808	777	860	1,077	1,172	1,157	-1%
School	41,351	43,066	44,716	45,907	44,858	45,860	2%
Total	44,520	46,606	48,431	49,917	49,436	50,628	2%

Table 1.16.1 (VTMR p27): Certificate enrolments in VETiS by program type and sector in which training activity was delivered, 2009 to 2014

	2009	2010	2011	2012	2013	2014	% change 2013 to 2014
School Based Apprenticeships and Traineeships (SBAT)							
VET - TAFE/University	2,346	2,017	1,355	1,312	1,843	1,920	4%
VET - Learn Local/Private RTO	2,799	1,933	3,001	3,160	1,918	2,030	6%
School	97	100	17	10	26	74	185%
Total SBATs	5,242	4,050	4,373	4,482	3,787	4,024	6%
Other VET qualification							
VET - TAFE/University	28,672	31,371	31,948	33,824	33,147	33,650	2%
VET - Learn Local/Private RTO	16,001	18,049	20,218	21,056	22,868	24,633	8%
School	10,861	10,336	10,509	9,076	8,661	8,050	-7%
Total other VET qualifications	55,534	59,756	62,675	63,956	64,676	66,333	3%
Total VETiS	60,776	63,806	67,048	68,438	68,463	70,357	3%

Gender

- In 2014 there were 234,910 male students enrolled in government subsidised training, this was 9 per cent lower than in 2013.
- In 2014 there were 208,139 female students enrolled in government subsidised training, this was 8 per cent lower than in 2013.
- In 2014 about 47 per cent of all students enrolled in government subsidised training were female, this was similar to the 2013 result.

Table 1.17.1 (VTMR p28): Students enrolled in government subsidised training by gender, 2009 to 2014

	2009	2010	2011	2012	2013	2014	% change 2013 to 2014
Female	140,902	161,552	208,499	251,863	226,567	208,139	-8%
Male	157,257	176,404	220,712	257,188	257,600	234,910	-9%
Not stated	1,443	1,270	1,069	746	598	638	7%
Total	299,602	339,226	430,280	509,797	484,765	443,687	-8%

Government Subsidised Activity and Participation by Regions

- All regions showed a decline between 2013 and 2014 in the number of government subsidised enrolments delivered in each region.
- The Hume region had the largest decrease between 2013 and 2014 of 35 per cent, while Northern Metropolitan Melbourne had the lowest with a decline of 4 per cent.

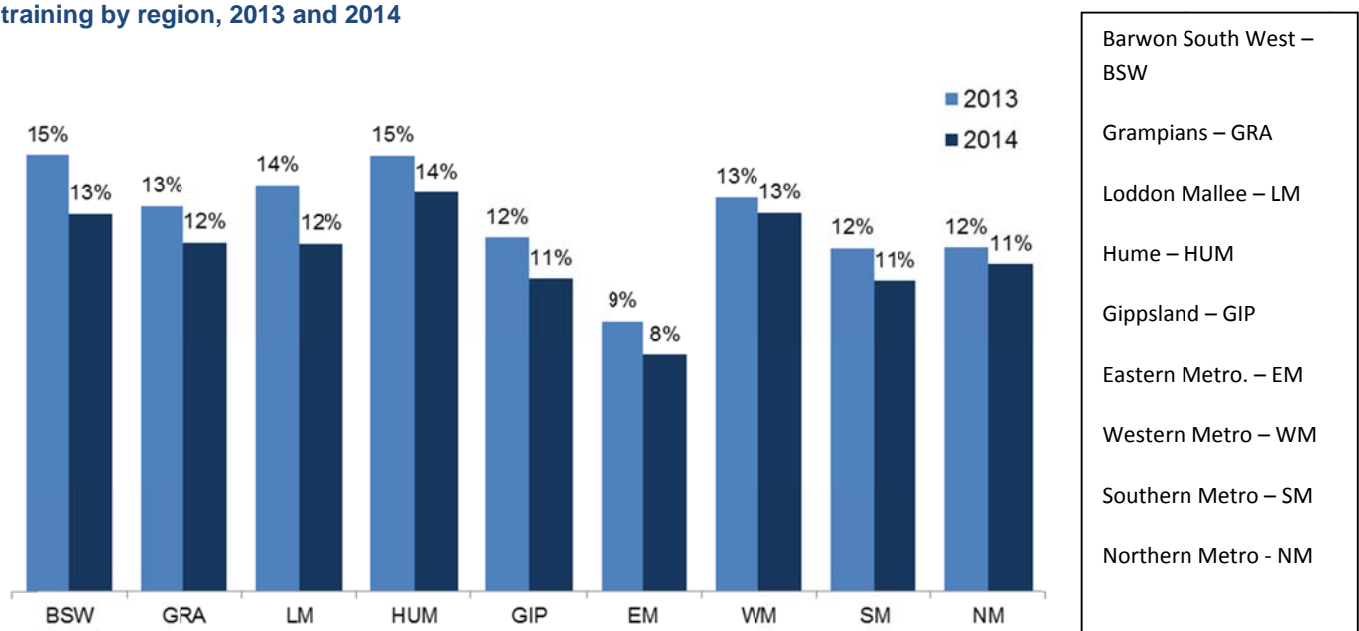
Table 1.18.1 (VTMR p29) : Government subsidised enrolments by delivery region, 2009 to 2014

	2009	2010	2011	2012	2013	2014	% change 2013 to 2014
Barwon South West	31,786	35,800	50,054	62,544	51,971	45,454	-13%
Grampians	16,194	15,005	17,187	18,867	17,876	16,440	-8%
Loddon Mallee	27,936	28,320	32,758	37,103	33,209	25,673	-23%
Hume	26,042	24,673	27,275	34,412	47,109	30,757	-35%
Gippsland	22,386	22,509	20,467	19,668	17,961	16,520	-8%
Eastern Metropolitan	52,174	60,140	73,646	75,971	68,097	56,149	-18%
Western Metropolitan	67,854	88,628	135,755	183,835	182,248	170,994	-6%
Southern Metropolitan	67,663	81,765	107,609	140,050	135,994	115,536	-15%
Northern Metropolitan	52,411	56,429	68,739	87,301	83,255	80,327	-4%
Interstate	64	115	59	122	257	5	-98%
Other*	13,384	14,969	17,494	14,888	11,910	2,888	-76%
Total	376,795	426,905	548,728	670,438	645,697	557,846	-14%

* Other includes on-line delivery and workplace delivery where the location cannot be defined.

- All regions showed a decline in the number of students participating in government subsidised training between 2013 and 2014.
- The largest percentage decline between 2013 and 2014 in the number of students enrolled in government subsidised training was the Loddon Mallee region where there was a 15 per cent decline.
- Overall there was a 12 per cent decline between 2013 and 2014 in the number of students living in regional Victoria enrolled in government subsidised training. The decline in metropolitan Melbourne was 7 per cent over the same period.

Figure 1.8 (VTMR p34): Estimated participation rate of students aged 15 to 64 years in government subsidised training by region, 2013 and 2014



The 2013 estimated resident population published by the Australian Bureau of Statistics were used to calculate the participation rate for each regional area in both 2013 and 2014 as the 2014 population data at the sub-state level was not yet available.

Learn Local Performance

- More government subsidised students engaged in more pre-accredited program enrolments in 2014 than in preceding year. In comparison to 2013, 1,104 more students engaged in pre-accredited programs during 2014 (up 4 per cent to 26,130) and there were 4,314 more reported course enrolments (up 12 per cent to 41,579) in pre-accredited training.
- The increase of student participation in pre-accredited programs in 2014 was not consistently distributed across the eight ACFE Board regional areas. Student participation in pre-accredited programs increased in the Victorian regional areas of Grampians, Loddon Mallee and Gippsland. Of these regions, the largest single rate of increase was reported in the Grampians (up 23 per cent to 1,425 students). Student participation decreased in the remaining two regional Victoria areas of Hume and Barwon South West. In metropolitan regions, student participation in pre-accredited programs increased in Eastern Metropolitan Melbourne (up 10 per cent to 3,967 students) and Southern Metropolitan Melbourne (up 6 per cent to 5,760 students). There was a decrease in student participation in pre-accredited programs in North-western Metropolitan Melbourne by 3 per cent to 6,996 students. In addition, the two AELs reported an increase of student participation in 2014 (up 63 per cent to 1,155 students).
- In 2014, Learn Local (ACE) providers reported increased participation of ACFE Board Priority Learners in pre-accredited programs. Increased student participation was reported in all Priority Learner categories, with the largest net increase being for people of a culturally and linguistically diverse background (CALD), up 9 per cent to 7,423 students. Victorians with a self-declared disability increased participation in pre-accredited programs by 9 per cent to 6,761 students. Disengaged Youth experienced the greatest increase rate, but from a relatively low base (up 18 per cent to 1,161 students). The priority learner categories are not mutually exclusive and reported students may be identified in any one or a combination of these categories.

Government Subsidised Training by Training Provider Type

- All provider types, except Private Registered Training Organisations (RTO), showed a decline in the number of government subsidised enrolments between 2013 and 2014. Private RTOs showed a marginal increase of 1,538.
- In 2014 over half (56 per cent) of all government subsidised enrolments were with Private RTOs. The share held by TAFEs was 25 per cent in 2014, down from 32 per cent in 2013.

Table 1.20 (VTMR p35): Government subsidised training providers by sector, 2009 to 2014

	2009	2010	2011	2012	2013	2014
Learn Local	320	316	309	298	283	280
University	4	4	4	4	4	4
Private RTO	246	344	422	445	428	411
TAFE	14	14	14	14	14	12

In February 2015, when the 2014 data was extracted, there were 499 contracted training providers.

Table 1.21.1(VTMR p35): Number of government subsidised enrolments by sector, 2009 to 2014

	2009	2010	2011	2012	2013	2014	% change 2013 to 2014
Learn Local	68,304	63,810	64,573	80,217	74,136	70,064	-5%
University	68,461	76,331	69,869	68,052	51,483	34,927	-32%
Private RTO	57,412	99,758	220,695	308,829	312,135	313,673	0%
TAFE	182,618	187,006	193,591	213,340	207,943	139,182	-33%
Total	376,795	426,905	548,728	670,438	645,697	557,846	-14%

Figure 1.9 (VTMR p36): Percentage share of government subsidised enrolments by sector, 2009 to 2014

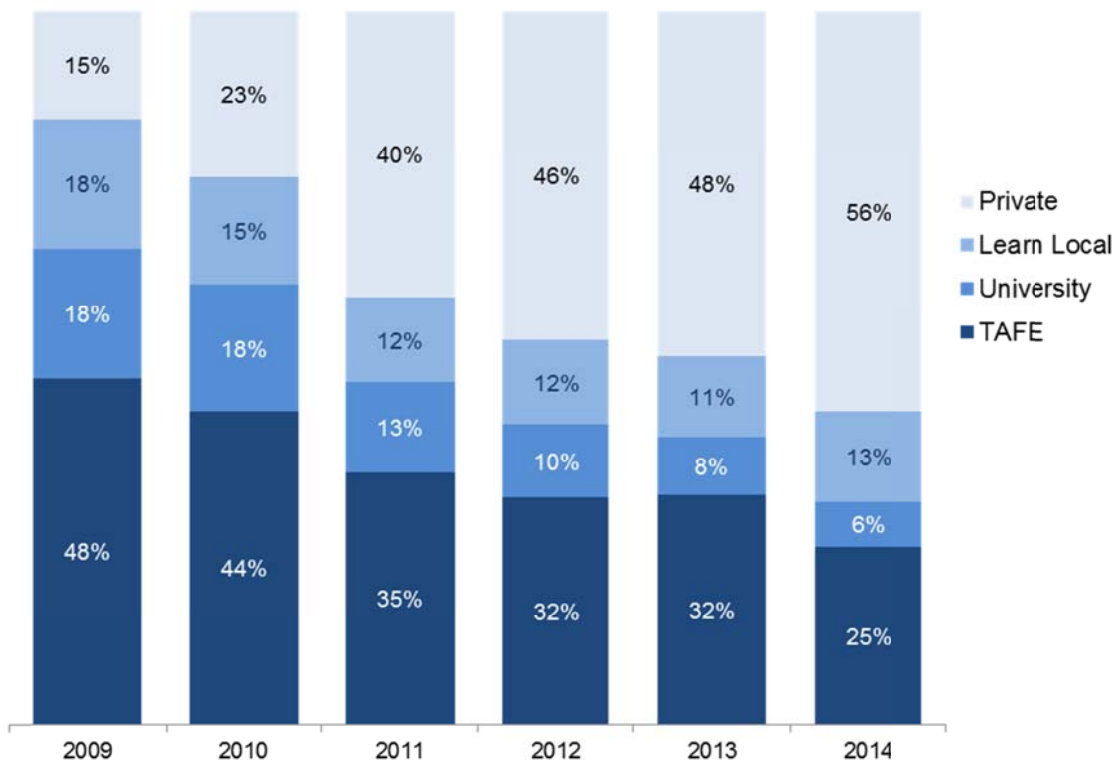


Table 1.23 (VTMR p37): Government subsidised course enrolments (AQF I and higher only), proportional share across sectors by occupation, 2014

Percentages total across rows in the table below

	TAFE	Univer- sity	Private RTO	Learn Local	Total (number)
Clerical and Administrative Workers	12%	4%	82%	3%	59,804
Community and Personal Service Workers	17%	5%	70%	8%	124,475
Labourers	32%	4%	61%	3%	32,654
Machinery Operators and Drivers	13%	0%	87%	0%	58,979
Managers	40%	3%	56%	2%	13,980
Professionals	34%	20%	43%	3%	23,554
Sales Workers	18%	4%	76%	2%	9,591
Technicians and Trades Workers	45%	12%	42%	1%	116,603
Other*	23%	6%	52%	18%	57,321
Total (AQF I+ only)	26%	7%	63%	5%	496,961

**Other includes foundation skills and LOTE courses, and courses that were not able to be coded directly into the Australian and New Zealand Standard Classification of Occupation.*

Table 1.24 (FTMR p38): Government subsidised course enrolments (AQF I and higher only), proportional share across sectors by industry, 2014

Percentages total across rows in the table below

	TAFE	Univer- sity	Private RTO	Learn Local	Total (number)
Accommodation and Food Services	25%	0%	71%	3%	28,446
Administrative and Support Services	28%	1%	68%	3%	11,084
Agriculture, Forestry and Fishing	58%	1%	40%	1%	11,884
Arts and Recreation Services	41%	12%	45%	3%	12,199
Construction	46%	13%	40%	0%	59,589
Cross-industry	15%	7%	76%	3%	55,176
Education and Training	27%	7%	56%	11%	9,585
Electricity, Gas, Water and Waste Services	56%	11%	33%	0%	1,019
Financial and Insurance Services	5%	4%	90%	0%	2,757
Health Care and Social Assistance	17%	5%	68%	9%	104,613
Information Media and Telecommunications	39%	38%	22%	1%	3,236
Manufacturing	21%	5%	74%	0%	44,759
Mining	78%	0%	22%	0%	347
Other Services	40%	5%	53%	2%	20,277
Professional, Scientific and Technical Services	48%	35%	17%	0%	10,560
Public Administration and Safety	17%	6%	76%	0%	8,562
Rental, Hiring and Real Estate Services	46%	6%	47%	0%	1,890
Retail Trade	27%	5%	66%	2%	9,934
Transport, Postal and Warehousing	14%	0%	86%	0%	42,885
Wholesale Trade	5%	3%	92%	0%	837
Other*	23%	6%	52%	18%	57,321
Total (AQF I+ only)	26%	7%	63%	5%	496,961

*Other includes foundation skills and LOTE courses, and courses that were not able to be coded directly into the Australian and New Zealand Standard Industry Classification.

TAFE Performance

- In 2014 there were a total of 220,020 students studying at TAFE, in government subsidised and fee-for-service (AQF and non-AQF). This was the lowest over 2009 to 2014 and 6 per cent lower than 2013.
- In 2014 overall training activity by TAFEs, including all government subsidised and all fee-for-service (AQF and non-AQF) course enrolments were the lowest over 2009 to 2014 at 289,591 in 2014. The 2014 result was down by 15 per cent compared to 2013.

Table 1.25.1 (VTMR p39): Students in government subsidised and fee-for-service training by TAFE, 2009 to 2014

	2009	2010	2011	2012	2013	2014	% change 2013 to 2014
Government subsidised	145,894	147,608	141,216	143,806	140,318	111,232	-21%
Fee-for-service*	139,928	131,592	122,213	123,803	107,147	119,323	11%
Total**	268,635	262,115	249,139	254,029	234,714	220,020	-6%

* Includes students studying AQF and non-AQF course of study

** Government subsidised and fee-for-service enrolments do not add to the total as a student may be enrolled in both at the same time

- TAFEs are a major provider of apprentice training, in 2014 there were 26,069 government subsidised apprentice enrolments delivered by TAFEs, which represented a 60 per cent share of all government subsidised apprentice enrolments across all sectors.
- In 2014 TAFEs delivered 6,485 government subsidised trainee enrolments, which accounted for a 17 per cent share of all government subsidised trainee enrolments.

Table 1.27 (VTMR p40): Government subsidised apprentice enrolments by TAFE, 2009 to 2014

	2009	2010	2011	2012	2013	2014
Number	27,004	29,024	28,744	27,742	26,317	26,069
TAFE share	65%	64%	62%	62%	61%	60%

Table 1.28 (VTMR p40): Government subsidised trainee enrolments by TAFE, 2009 to 2014

	2009	2010	2011	2012	2013	2014
Number	14,315	13,033	12,270	12,312	8,011	6,485
TAFE Share	29%	23%	15%	14%	14%	17%

Government Subsidised Training – Learners Facing Barriers

- In 2014 there were 2,095 Indigenous students enrolled in government subsidised training at TAFEs. This represented a 34 per cent share of all Indigenous students in government subsidised training across all sectors in 2014.
- In 2014 there were 22,246 unemployed students enrolled in government subsidised training in TAFE. This represented a 16 per cent share of all unemployed students in government subsidised training.
- In 2014 there were 8,400 student with a disability enrolled in government subsidised training at TAFEs. This represented a 20 per cent share of all disabled students in government subsidised training.
- In 2014 there were 19,584 students from a culturally and linguistically diverse background (CALD) enrolled in government subsidised training at TAFEs. This represented a 14 per cent share of all CALD students in government subsidised training.

- In 2014 there were 10,059 young people without at least Year 12 or a Certificate II, not at school and enrolled in government subsidised training in a Certificate II or above in TAFE. This represented a 45 per cent of all these students in government subsidised training in 2014.
- In 2014 there were 55,081 older students not holding a Certificate III or above and enrolled in government subsidised training in TAFE. This represented a 22 per cent share of all these students in government subsidised training in 2014.

Table 1.29 (VTMR p41): Indigenous students enrolled in government subsidised training in TAFE, 2009 to 2014

	2009	2010	2011	2012	2013	2014
Number	2,435	2,602	2,523	2,283	2,390	2,095
TAFE Share	56%	54%	45%	37%	37%	34%

Table 1.30 (VTMR p41): Unemployed students enrolled in government subsidised training in TAFE, 2009 to 2014

	2009	2010	2011	2012	2013	2014
Number	24,578	25,388	25,816	27,059	29,503	22,246
TAFE Share	49%	41%	29%	23%	22%	16%

Table 1.31 (VTMR p42): Disabled students enrolled in government subsidised training in TAFE, 2009 to 2014

	2009	2010	2011	2012	2013	2014
Number	10,270	10,821	11,203	10,437	9,780	8,400
TAFE Share	43%	40%	33%	26%	24%	20%

Table 1.32 (VTMR p42): Culturally and Linguistically Diverse (CALD) students enrolled in government subsidised training in TAFE, 2009 to 2014

	2009	2010	2011	2012	2013	2014
Number	28,187	27,355	25,510	22,963	26,877	19,584
TAFE Share	45%	39%	26%	18%	20%	14%

Table 1.33 (VTMR p42): Young people without at least Year 12 or a Certificate II, not at school and enrolled in government subsidised training in Certificate II or above in TAFE, 2009 to 2014

	2009	2010	2011	2012	2013	2014
Number	13,766	13,590	12,796	11,981	10,023	10,059
TAFE Share	61%	52%	44%	41%	41%	45%

Table 1.34 (VTMR p42): Older students not holding a Certificate III or above and enrolled in government subsidised training in TAFE, 2009 to 2014

	2009	2010	2011	2012	2013	2014
Number	63,479	64,471	69,130	71,145	69,719	55,081
TAFE Share	48%	43%	32%	27%	27%	22%

TAFE Fee-For-Service Training Activity

- In 2014 33 per cent of TAFE fee-for-service enrolments (including AQF and non-AQF) were at the Certificate I and II level.
- In 2014 25 to 44 year olds had the highest level of fee-for-service enrolments at TAFE at 62,734, which represented 42 per cent of all TAFE fee-for-service enrolments.
- In 2014 50,859 fee-for-service enrolments were delivered in regional Victoria, this was up by 17 per cent on 2013.
- In 2014 95,994 fee-for-service enrolments were delivered in metropolitan Melbourne by TAFEs, this was up by 21 per cent on 2013.
- In 2014 the top occupation was Food Preparation Assistants with 10,785 fee-for-service enrolments, up on 2013 by 79 per cent.

Table 1.37.1 (VTMR p45): Fee-for-service (AQF and non-AQF) enrolments by TAFE by delivery region, 2009 to 2014

	2009	2010	2011	2012	2013	2014	% change 2013 to 2014
Barwon South West	19,066	18,046	16,832	17,040	12,734	11,505	-10%
Grampians	186	0	0	0	0	266	-
Loddon Mallee	8,519	7,251	6,392	8,780	7,224	8,244	14%
Hume	15,817	17,236	15,166	16,811	14,760	15,834	7%
Gippsland	11,343	10,985	12,700	14,852	8,872	15,010	69%
Eastern Metropolitan	10,704	9,262	8,256	7,109	7,317	9,534	30%
Western Metropolitan	21,604	20,464	17,546	23,634	20,603	27,978	36%
Southern Metropolitan	32,860	31,755	28,911	28,204	30,835	36,905	20%
Northern Metropolitan	24,411	21,406	21,393	20,672	20,747	21,577	4%
Interstate	791	153	180	435	1,947	4,068	109%
Other	15,436	15,041	15,149	14,867	7,413	0	-100%
Total	160,631	151,513	142,435	152,012	131,921	150,409	14%

Table 1.38.1 (VTMR p46): Top 10 occupations for fee-for-service (AQF and non-AQF) enrolments by TAFE, 2009 to 2014

	2009	2010	2011	2012	2013	2014	% change 2013 to 2014
Food Preparation Assistants	6,938	6,757	6,564	7,236	6,013	10,785	79%
Personal Carers and Assistants	2,722	2,747	2,145	8,715	6,602	7,339	11%
Construction and Mining Labourers	2,103	6,662	6,749	6,670	5,244	5,436	4%
Tertiary Education Teachers	3,695	3,251	4,453	4,961	5,109	4,481	-12%
Stationary Plant Operators	1,576	1,385	3,110	4,587	4,372	4,238	-3%
Miscellaneous Labourers	2,575	2,559	3,097	3,306	3,465	4,056	17%
Farm, Forestry and Garden Workers	3,058	2,774	3,427	3,194	3,394	3,569	5%
Building and Engineering Technicians	762	904	1,635	2,323	3,077	3,357	9%
Cleaners and Laundry Workers	3,736	2,395	2,138	2,528	2,903	2,931	1%
Food Trades Workers	1,353	1,404	1,565	1,664	1,892	2,695	42%
Other/unknown*	132,113	120,675	107,552	106,828	89,850	101,522	13%
Total	160,631	151,513	142,435	152,012	131,921	150,409	14%

* Including training not directly related to an occupation

Apprenticeships and Traineeships

- There were 80,042 students who were enrolled in 81,935 government subsidised apprenticeship or traineeship courses in 2014.
- The number of government subsidised enrolments in 2014 were down by 19 per cent compared to 2013. The number of students in training was down by 20 per cent over the same period.
- In 2014, there were 43,453 government subsidised apprentice course enrolments. Of these, 39 per cent (17,105) were new enrolments commencing in 2014.
- The overall number of apprentice course enrolments was marginally higher in 2014 than 2013.
- About one third of apprentice course enrolments were by students aged 15 to 19. Enrolments by this age group were lower in 2014 compared to previous years.
- The vast majority of apprentice course enrolments were in occupations classified as Technicians and Trade Workers, which include Automotive and Engineering Trades Workers, Construction Trades Workers, Electrotechnology and Telecommunications Trades Workers, Engineering ICT and Science Technicians, Food Trades Workers, Other Technicians and Trades Workers, and Skilled Animal and Horticultural Workers.
- In 2014, there were 38,483 government subsidised trainee course enrolments. Of these, 44 per cent (16,976) were new enrolments commencing in 2014.
- The number of trainee course enrolments in 2014 was lower than previous years, 2014 total enrolments were down by 34 per cent compared to 2013.
- In 2014, trainee course enrolments were lower than 2011, 2012 and 2013 across all age groups.

Table 2.1.1 (VTMR p53): Government subsidised training in apprenticeships and traineeships by course enrolments and students, 2009 to 2014

	2009	2010	2011	2012	2013	2014	% change 2013 to 2014
Course enrolments	90,818	102,143	126,461	134,314	101,605	81,935	-19%
Students	89,585	99,989	124,478	133,145	100,641	80,042	-20%


Table 2.4.1 (VTMR p56): Government subsidised apprentice course enrolments by occupation, 2009 to 2014

	2009	2010	2011	2012	2013	2014	% change 2013 to 2014
Clerical and Administrative Workers	3	2	1	3	3	2	-33%
Community and Personal Service Workers*	123	129	127	108	90	55	-39%
Labourers**	77	60	114	132	88	75	-15%
Machinery Operators and Drivers	2	1	2	1	0	1	-
Managers	2	0	0	0	0	0	-
Professionals	0	0	0	0	1	1	0%
Sales Workers	99	109	169	282	195	344	76%
Technicians and Trades Workers	41,334	44,960	45,877	44,516	42,823	42,975	0%
<i>Automotive and Engineering Trades Workers</i>	9,282	9,405	9,236	9,537	9,117	9,067	-1%
<i>Construction Trades Workers</i>	14,765	16,882	18,023	16,677	15,041	14,192	-6%
<i>Electrotechnology and Telecommunications Trades Workers</i>	6,846	7,655	7,811	7,596	7,617	7,807	2%
<i>Engineering, ICT and Science Technicians</i>	31	28	75	133	511	669	31%
<i>Food Trades Workers</i>	4,286	4,354	4,256	4,290	4,535	5,151	14%
<i>Other Technicians and Trades Workers</i>	4,503	4,779	4,508	4,348	4,237	4,324	2%
<i>Skilled Animal and Horticultural Workers</i>	1,621	1,857	1,968	1,935	1,765	1,765	0%
Total	41,640	45,261	46,290	45,042	43,200	43,453	1%

* Community and Personal Services occupational category included courses such as Diploma of Dental Technology and Certificate IV in Racing (Jockey).

** Labourers occupational category included courses such as Certificate III in Automotive Glazing, Technology, Certificate III in Laundry Operations and Certificate III in Dry Cleaning Operations.


Table 2.6.1 (VTMR p59): Government subsidised apprentice course enrolments by industry, 2009 to 2014

	2009	2010	2011	2012	2013	2014	% change 2013 to 2014
Accommodation and Food Services	2,773	2,809	2,647	2,728	3,008	3,611	20%
Administrative and Support Services	430	527	562	474	263	113	-57%
Agriculture, Forestry and Fishing	37	29	34	49	80	173	116%
Arts and Recreation Services	560	586	647	653	601	619	3%
Construction	21,812	24,799	26,133	24,712	23,293	22,870	-2%
Cross-industry	1	1	0	1	0	0	-
Electricity, Gas, Water and Waste Services	195	200	240	235	319	377	18%
Financial and Insurance Services	2	1	0	0	0	0	-
Health Care and Social Assistance	104	104	103	83	70	30	-57%
Information Media and Telecommunications	25	14	3	1	0	1	-
Manufacturing	6,781	6,881	6,748	6,752	6,633	6,342	-4%
Other Services	6,690	6,967	6,774	6,848	6,514	6,780	4%
Professional, Scientific and Technical Services	139	156	161	158	293	295	1%
Public Administration and Safety	93	102	98	111	101	98	-3%
Retail Trade	1,895	1,949	2,013	2,137	1,977	2,124	7%
Transport, Postal and Warehousing	11	20	11	13	4	10	150%
Wholesale Trade	93	115	116	87	44	9	-80%
Total	41,640	45,261	46,290	45,042	43,200	43,453	1%


Table 2.12.1 (VTMR p67): Government subsidised trainee course enrolments by industry, 2009 to 2014

	2009	2010	2011	2012	2013	2014	% change 2013 to 2014
Accommodation and Food Services	7,858	8,517	10,068	10,665	5,638	3,806	-32%
Administrative and Support Services	4,562	5,722	7,166	6,595	3,991	2,495	-37%
Agriculture, Forestry and Fishing	1,084	1,119	1,664	2,123	2,480	2,351	-5%
Arts and Recreation Services	2,270	2,242	2,700	2,563	1,021	1,702	67%
Construction	365	412	715	925	930	634	-32%
Cross-industry	5,055	6,755	12,771	16,186	7,844	3,771	-52%
Education and Training	401	362	495	439	1,092	508	-53%
Electricity, Gas, Water and Waste Services	148	115	220	284	175	71	-59%
Financial and Insurance Services	351	383	535	543	554	478	-14%
Health Care and Social Assistance	6,426	6,657	7,540	7,754	6,720	5,613	-16%
Information Media and Telecommunications	173	168	149	154	281	304	8%
Manufacturing	3,108	4,845	10,856	14,360	12,872	8,728	-32%
Mining	52	23	16	34	93	52	-44%
Other Services	664	564	554	477	323	310	-4%
Professional, Scientific and Technical Services	248	275	315	337	267	216	-19%
Public Administration and Safety	77	58	49	95	240	227	-5%
Rental, Hiring and Real Estate Services	257	268	369	379	246	169	-31%
Retail Trade	13,345	15,042	18,330	18,300	7,334	2,806	-62%
Transport, Postal and Warehousing	2,596	3,142	5,195	6,485	6,023	4,177	-31%
Wholesale Trade	110	212	467	551	283	64	-77%
Total*	49,179	56,882	80,173	89,274	58,407	38,483	-34%

*Totals for 2009, 2010 and 2012 include a small number of enrolments that were not able to be coded directly into ANZSIC (29, 1 and 24 enrolments, respectively).


Table 2.10.1 (VTMR p63): Government subsidised trainee course enrolments by occupation, 2009 to 2014

	2009	2010	2011	2012	2013	2014	% change 2013 to 2014
Clerical and Administrative Workers	8,870	11,700	19,725	23,143	12,441	6,093	-51%
Community and Personal Service Workers	15,575	16,171	18,777	18,917	11,972	9,813	-18%
Labourers	6,163	7,025	12,096	13,735	10,407	7,666	-26%
Machinery Operators and Drivers	2,756	3,826	6,550	8,800	10,097	7,091	-30%
Managers	245	478	1,004	1,529	1,097	804	-27%
Professionals	94	292	909	1,398	868	203	-77%
Sales Workers	13,604	15,295	18,658	18,682	7,716	3,157	-59%
Technicians and Trades Workers	1,843	2,094	2,454	3,046	3,809	3,656	-4%
Total*	49,179	56,882	80,173	89,274	58,407	38,483	-34%

*Totals for 2009, 2010 and 2012 include a small number of enrolments that were not able to be coded directly into ANZSCO (29, 1 and 24 enrolments, respectively).

Training in Specialised or In Shortage Occupations²

- There were 439,640 enrolments in industry specific training in 2014. Of these, 207,202 enrolments were in qualifications related to specialised or in shortage occupations in 2014.
- Enrolments aligned to specialised or in shortage occupations accounted for 47 per cent of all industry specific enrolments in 2014. The proportion of industry training aligned to specialised or in shortage occupations has increased by 4 percentage points since 2013.
- In 2014, there were 169,730 enrolments (39 per cent of all industry specific enrolments) in qualifications aligned to occupations in shortage.
- In 2014, enrolments in qualifications for specialised occupations accounted for 30 per cent of all industry specific enrolments (133,745 enrolments).
- Private RTOs accounted for a majority of training related to critical occupations; 59 per cent of delivery in 2014.
- The highest number of enrolments were in qualifications aligned to Child Care Workers and Aged or Disabled Carers in 2014.

² Note: all data in this section is for industry specific enrolments, i.e. training with a direct labour market outcome. This covers government subsidised training in AQF qualifications, and excludes training in foundation skills, education pathways and low-level courses in languages other than English.

Figure Error! No text of specified style in document..1 (VTMR p70) : Percentage of government subsidised industry specific enrolments in either specialised or in shortage occupations by sector, 2011 to 2014

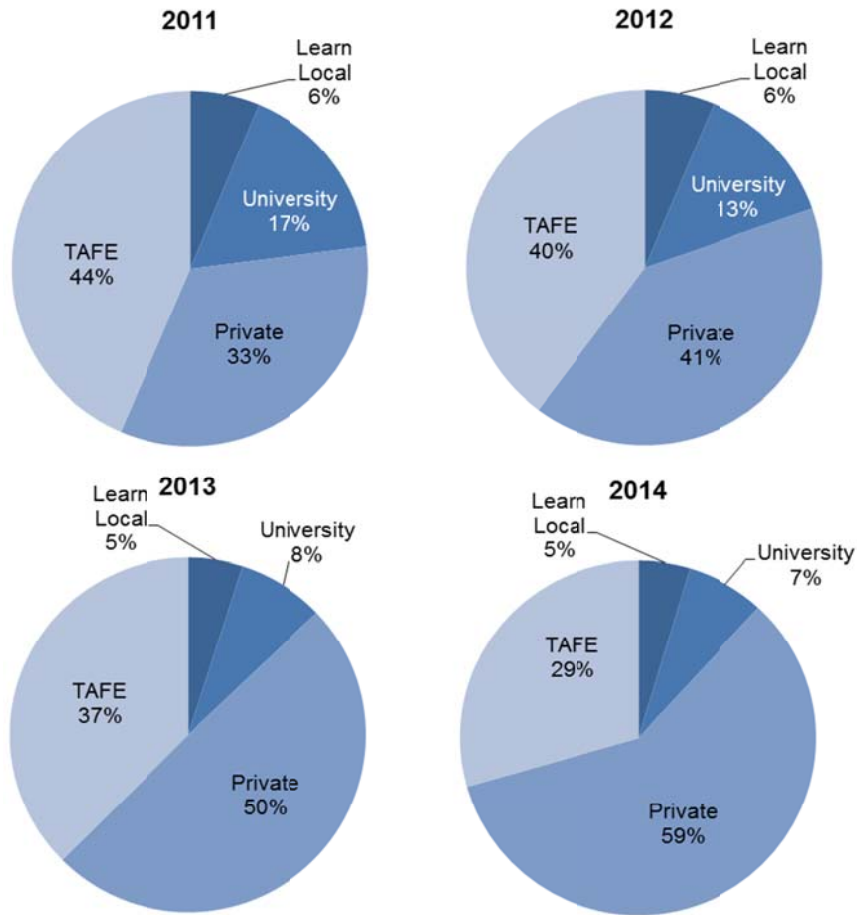


Table Error! No text of specified style in document..1 (VTMR p72): Industry enrolments in qualifications related to either specialised or in shortage occupations

Industry	Enrolments (Total industry specific qualifications)					Enrolments (Specialised OR in shortage)				
	Share 2014	2011	2012	2013	2014	Share 2014	2011	2012	2013	2014
Accommodation and Food Services	6%	35,489	44,629	30,254	28,446	11%	8,007	11,822	18,518	23,115
Administrative and Support Services	3%	20,575	21,593	15,585	11,084	-	-	-	-	-
Agriculture, Forestry and Fishing	3%	9,486	9,797	8,313	11,884	0.3%	577	646	650	663
Arts and Recreation Services	3%	27,465	26,649	15,890	12,199	1%	771	680	1,322	1,467
Construction	14%	47,721	51,939	62,702	59,589	20%	33,659	37,090	44,366	41,459
<i>Cross-industry e.g. project managers, HR</i>	13%	81,461	90,951	60,263	55,176	1%	3,841	3,253	2,113	2,641
Education and Training	2%	10,192	10,098	12,710	9,585	2%	6,245	5,691	3,918	3,853
Electricity, Gas, Water and Waste Services	0.2%	1,029	952	772	1,019	0.4%	845	769	524	766
Financial and Insurance Services	1%	6,733	6,289	3,109	2,757	-	11	96	55	-
Health Care and Social Assistance	24%	61,399	77,646	87,333	104,613	46%	55,294	70,248	77,563	94,442
Information Media and Telecommunications	1%	3,773	3,876	3,305	3,236	0.3%	488	524	530	582
Manufacturing	10%	33,696	41,625	43,467	44,759	3%	8,592	8,900	7,975	7,226
Mining	0.1%	276	531	368	347	-	-	-	-	-
Other Services	5%	19,515	21,089	21,107	20,277	4%	4,672	5,933	7,411	8,405
Professional, Scientific and Technical Services	2%	12,465	12,117	10,567	10,560	0.5%	3,137	3,116	1,077	997
Public Administration and Safety	2%	7,877	8,372	8,128	8,562	0.1%	399	415	347	230
Rental, Hiring and Real Estate Services	0.4%	1,552	2,293	1,722	1,890	-	-	-	-	-
Retail Trade	2%	33,241	35,976	15,379	9,934	1%	1,368	1,806	2,418	2,521
Transport, Postal and Warehousing	10%	28,018	38,012	46,121	42,885	9%	8,293	11,137	21,767	18,836
Wholesale Trade	0.2%	853	903	1,031	837	-	1	-	-	-
All industries	100%	442,815	505,337	448,126	439,640	100%	136,200	162,126	190,554	207,202

Learners Facing Barriers to Participation

Table 4.1.1 (VTMR p73): Students enrolled in government subsidised training by selected learner groups*, 2009 to 2014

	2009	2010	2011	2012	2013	2014	% change 2013 to 2014
Indigenous	4,318	4,801	5,590	6,178	6,480	6,167	-5%
Students with a disability	23,623	27,237	34,148	40,250	40,517	41,318	2%
CALD	62,102	70,582	97,245	126,322	137,654	139,148	1%
Unemployed	50,176	62,514	89,329	118,482	135,048	135,910	1%
Aged 15-19	22,574	26,312	28,935	29,499	24,663	22,128	-10%
Aged 20-64	131,847	149,569	214,042	266,228	260,856	249,109	-5%

The 2014 data show:

- There were 6,167 Indigenous students who were enrolled in 7,737 government subsidised training courses.
- In 2014, while the total number of government subsidised course enrolments by Indigenous students was 10 per cent lower than 2013, the number of enrolments in Certificate III and above had increased (by 7 per cent).
- Sixty two per cent of enrolments by Indigenous students were in Certificate III and above levels.
- There were 41,318 students with a disability who were enrolled in 55,015 government subsidised training courses.
- While the number of students with a disability enrolled in government subsidised training in 2014 was 2 per cent higher than in 2013, the number of enrolments by these students declined by 5 per cent between 2013 and 2014.
- The decline in course enrolments by students with a disability in 2014 in comparison to 2013 was mainly due to a considerable decrease in enrolments at the Certificates I to II levels. However, there were increases in module only enrolments and enrolments at the Certificate III to IV levels in 2014.
- Forty five per cent of enrolments by students with a disability were in Certificate III to IV and above levels.
- There were 139,148 students from a CALD background enrolled in 176,532 government subsidised training courses.
- While the number of students with a CALD background enrolled in government subsidised training in 2014 was 1 per cent higher than in 2013, the number of enrolments by these students declined by 4 per cent. The biggest decline in course enrolments was in Certificate I to II levels in comparison to enrolments in 2012 and 2013.
- Seventy one per cent of course enrolments by students from a CALD background were in Certificate III to IV and above levels.
- There were 135,910 unemployed students who were enrolled in 172,634 government subsidised training courses.
- While the number of unemployed students enrolled in government subsidised training in 2014 was 1 per cent higher than in 2013, the number of enrolments by these students declined by 6 per cent. This was due to a significant decline in enrolments in Certificate I to II levels in 2014.
- Sixty nine per cent of course enrolments by unemployed students were in Certificate III to IV and above levels. The 2014 data show that:
- There were 22,128 students who were aged 15 to 19 without at least Year 12 or a Certificate II and not at school, enrolled in 25,224 government subsidised courses at Certificate II and above levels.
- The number of these students declined by 10 per cent between 2013 and 2014.
- There were 249,109 students who were aged 20 to 64 and not holding a Certificate III or above qualification enrolled in 313,899 government subsidised courses.
- There were 60,682 students enrolled in 66,296 government subsidised foundation skills courses in 2014. Course enrolments were down by 56 per cent on 2013 level.